

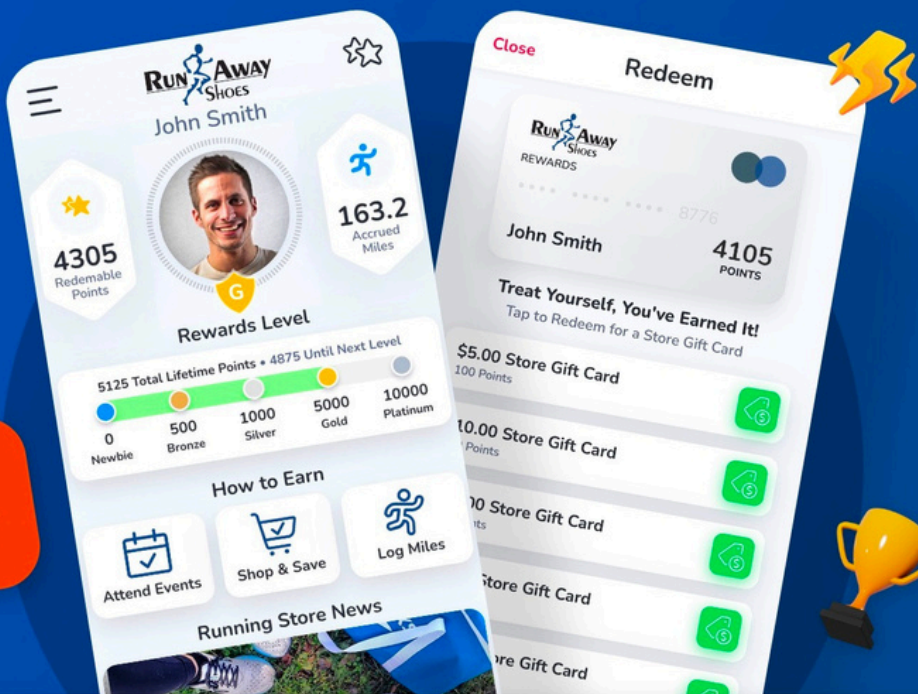
55 R A T B 2026 APRIL 11

PREVEA
health





Meet Our New Loyalty App



Earn By Shopping
Score For Running
Attend Events
Stay Up to Date



1. SCAN TO DOWNLOAD



2. SCAN FOR POINTS



AT RACE

A note from the Director

This year marks Year 12!

As many of you know, Run Away to the Bay is truly a labor of love. Each city, county, and parks department brings its own unique requirements, and we're grateful to work through all of it to make this event happen. Most of all, we're excited to have you be a part of it.

How many years have you participated in Run Away to the Bay?

We'd love for you to share your favorite Run Away to the Bay year and reason why. You can e-mail it to events@runawayshoes.net. Who knows—you might see your story featured in next year's booklet!

2018 is the year that stands out for me. That was the year of "Rundas"... and 22 inches of snow! We had to pivot our plans for that year - but it still ended up being a great time. This year had me wondering for a moment—but thankfully the temps warmed up and we're in good shape.

I hope you all enjoy the camaraderie, the weather, and maybe even an occasional beverage along the way.

Thank you for being here and stay safe!

A handwritten signature in white ink that reads "Ross". The signature is stylized with a large, sweeping initial 'R' and a cursive 'oss'.

Runner's Prayer

Run by my side.

Live in my heartbeat.

Give strength to my steps.

As the cold surrounds me,

as the wind pushes me,

I know you surround me.

As the sun warms me,

as the rain cleanses me,

I know you are touching me,

challenging me,

loving me.

I give you this run.

Thank you for

matching my stride.

Amen

THANK YOU!

TITLE
SPONSOR



SERIES
SPONSOR



MAJOR SPONSORS



WHEN IT'S YOUR TURN TO RUN...

You must be wearing:

- Slap Band
- Race Bib

You must follow the Run Away to the Bay signs.

- They will be placed on the side of the road that you should run on
- If there is a trail or sidewalk available, run there.

Awards Eligibility: Teams must cover the entire race distance to be eligible for awards and official finish time. No rides or skipping sections of the course.



EXCHANGE INSTRUCTIONS

There are **no formal exchange zones or set legs.** You can exchange runners whenever you would like and as many times as you like. If you would like the guidance of some great exchange locations, please see this icon in the booklet and Landmark Distances on the next page.



SAFETY FIRST: When you decide to exchange runners, please be mindful of where you pull off the course so that the runners can merge onto and off the course safely.





LANDMARK DISTANCES

Total Distance

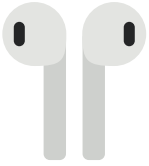
Start to BAGO Bar & Grill	8.3 miles
BAGO Bar & Grill to Mahler Park	2.4 miles
Mahler Park to Smith Park	4.25 miles
Smith Park to Jefferson Park	1.4 miles
Jefferson Park to Stone Toad Bar & Grill	2 miles
Stone Toad Bar & Grill to Barker Farm Park	.5 mile
Barker Farm Park to Darboy Park	3.3 miles
Darboy Park to Rocky & Tara's Nut Haus	7 miles
Rocky & Tara's Nut Haus to Hill Rd	7 miles
Hill Rd to Greenleaf Trailhead	3.2 miles
Greenleaf Trailhead to Ledgestone Vinyard	1.25 miles
Ledgestone Vinyard to Rockland Rd	5.75 miles
Rockland Rd. to Fox Point Boat Launch	3.4 miles
Fox Point Boat Launch to Hagemeister Park	4.4 miles



SAFETY FIRST

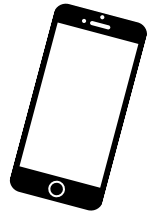
USE SIDEWALKS AND PATHS WHEN AVAILABLE ON THE COURSE.

ALL TRAFFIC HAS THE RIGHT-OF-WAY!



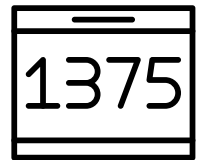
HEADPHONES: KEEP THE VOLUME LOW OR USE ONE EARBUD.

CONSIDER KEEPING YOUR PHONE WITH YOU WHEN IT'S YOUR TURN TO RUN.



LOOK FOR THIS SYMBOL IN THE BOOKLET FOR ADDITIONAL SAFETY NOTES ALONG THE WAY.

FILL OUT THE BACK OF YOUR BIB WITH ANY IMPORTANT MEDICAL INFORMATION AND EMERGENCY CONTACTS.



WHEN YOU DECIDE TO EXCHANGE RUNNERS, PLEASE BE MINDFUL OF WHERE YOU PULL OFF THE COURSE SO THAT THE RUNNERS CAN MERGE ONTO AND OFF THE COURSE SAFELY.

SECURE YOUR VEHICLE MAGNET ON THE BACK OF YOUR VEHICLE





SAFETY FIRST: APPS

DOWNLOAD THE WHAT3WORDS APP

Every 3 meter square of the world has been given a unique combination of three words. This is a GPS alternative many emergency departments train with to pinpoint locations faster than GPS or cross roads.



IN AN EMERGENCY, CALL 911

COMMUNICATING WITH YOU IN AN EMERGENCY:

RACE OFFICIALS WILL E-MAIL EVERYONE AND MESSAGE IN THE REMIND APP:

A CAPTAIN FROM EACH TEAM SHOULD DOWNLOAD THE REMIND APP. YOU CAN ALSO COMMUNICATE WITH RACE OFFICIALS THIS WAY.



TEXT THIS MESSAGE: @RATTB26

TO: 81010

TO JOIN THE GROUP OR VISIT:

[HTTPS://WWW.REMIND.COM/JOIN/RATTB](https://www.remind.com/join/rattb)

COURSE OVERVIEW



**SCAN
FOR
COURSE**

FINISH

START

START LINE INSTRUCTIONS



Restrooms are located in shelter in the south end of the parking lot by the Reetz Softball Complex. There are NO restrooms AT the start line.

Packets will be available for teams to pick-up along the north end of the parking lot beginning at 6:00am through the start of the last wave.



Please attend your assigned wave start time!



PREVEA ORTHOPEDIC WALK-IN INJURY CLINIC



FAST CARE FOR ORTHOPEDIC INJURIES – NO APPOINTMENT NEEDED.

Whether you're sidelined by a running injury, sprained something at work or dealing with a swollen joint, we know one thing: you don't want to wait for care. That's why we've made it easier to get started.

Quick access to trusted orthopedic providers—without the wait—to treat urgent, non-life-threatening orthopedic injuries for all ages.

- No appointment needed.
- Same-day access.
- Avoid unnecessary ER visits.
- Most insurance plans accepted.

Prevea Orthopedics. Specializing in you.

WALK-IN!

Prevea Orthopedics &
Sports Medicine Center
inside HSHS St. Mary's
Hospital Medical Center

1726 Shawano Ave.

Green Bay

Monday through Friday
from 8 a.m. to 4 p.m.

Closed holidays.

PREVEA
health

W Snell Rd

E Snell Rd

KENNVILLE

Bay



**See & Be Seen:
Run on the left
side of the road.**

Onward!

LEFT onto Oaks Trail
that then runs right
into Hickory St.

LEFT onto East
Murdock Avenue

RIGHT onto Bowen
St.

Bowen St

Harrison St

E Murdock Ave

E Murdock Ave

Hickory St

Oaks Trail

Follow along on



New York Ave



START

76

45




BAGO Bar & Grill
6392 County Rd A,
Neenah, WI 54956

Porta Potty Stop (I)



**Head straight onto
North Shore Drive**

 Please use the path
between mile 5 & 6

**Porta Potty Stop
(I) at Trailhead**



**Continue on
County Rd A**

E Sunnyview Rd

Indian Point Rd

Winnebago

North Asylum Bay

Snell Rd

Adella Beach



LEFT onto E Wisconsin Ave
RIGHT onto Oak Street
STRAIGHT onto West G
Bryan Bridge



Run on the sidewalk



**See & Be Seen:
Run on the left
side of the road.**

RIGHT onto
**South Park
Avenue**

Mahler Park
1536 S Park Ave,
Neenah
Porta Potty Stop (I)





**LEFT onto
Ice St
RIGHT onto
2nd St
LEFT onto
Konemac St
RIGHT onto
Plank Rd**

**LEFT onto
Melissa St
RIGHT onto
Manitowoc Rd**

**Barker Farm
Park
2170 Plank
Rd Menasha**

**Stone Toad
Bar & Grill
1109 Oneida St
Menasha**

**Jefferson Park
915 Third St
Menasha
Restrooms (Main Pavilion)**



**See & Be Seen: Run on the
left side of the road.**

**2nd
Ice St**

**Plank
Konemac**

17

18

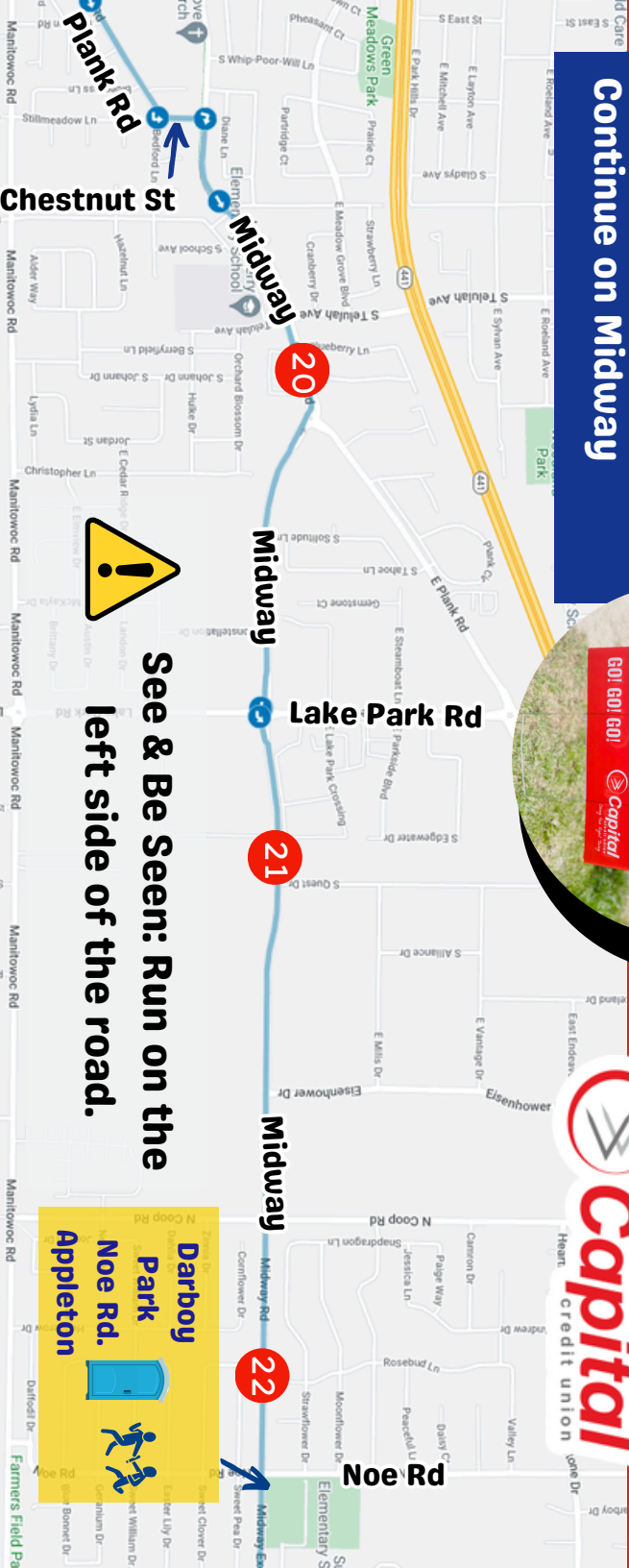
10

19

STRAIGHT onto Plank Rd
LEFT onto Chestnut Lane
RIGHT onto Midway
Continue on Midway



We believe in "Doing the Right Thing" ... one member, one employee, and one situation at a time.



See & Be Seen: Run on the left side of the road.

Darboy Park
Noe Rd.
Appleton



Visit us online at capitalcu.com
ph: 920.494.2828

Striving Towards Financial Well-Being, One Step at a Time



A proud sponsor of **Run Away to the Bay.**

YOU'RE STRONG ENOUGH!



**Continue
Straight**

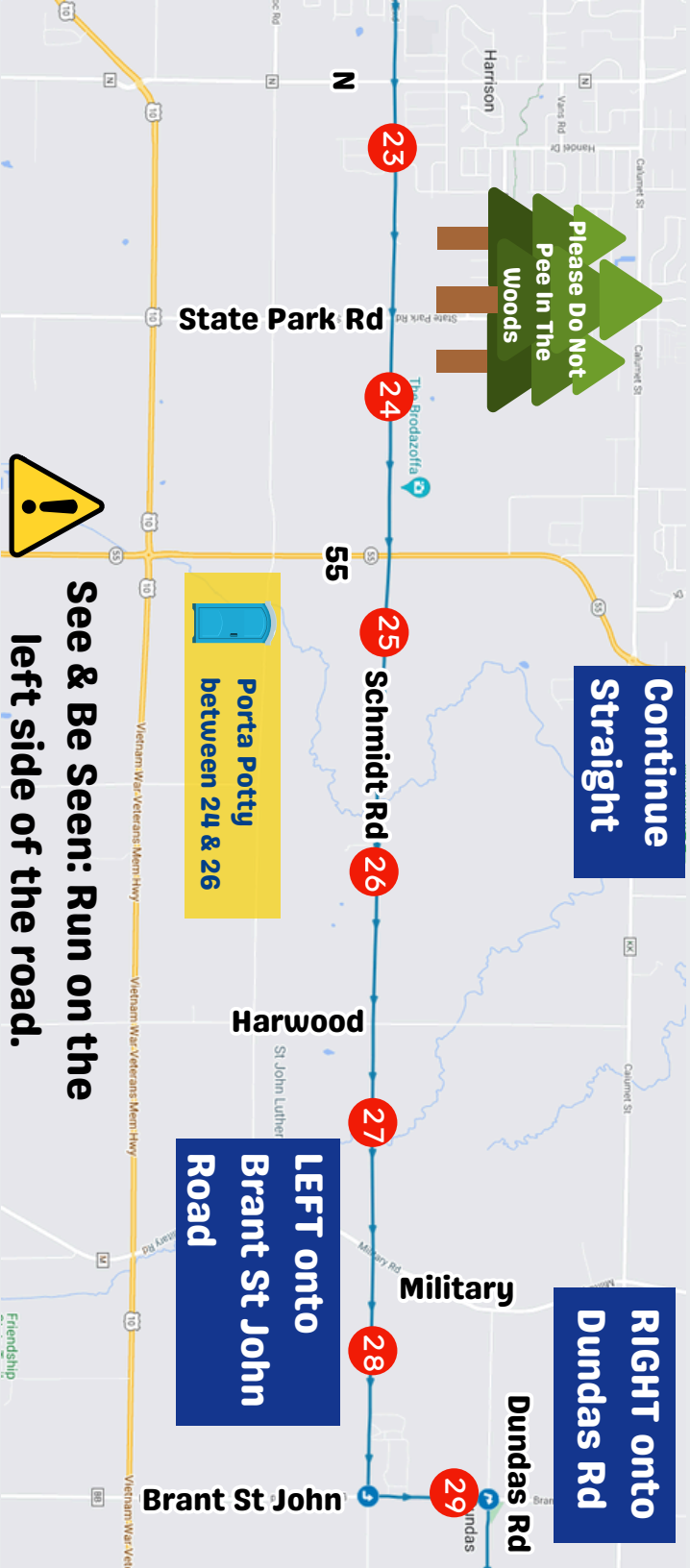
**RIGHT onto
Dundas Rd**

**Porta Potty
between 24 & 26**

**LEFT onto
Brant St John
Road**



**See & Be Seen: Run on the
left side of the road.**





Visit the Capital Credit Union Table for
Cotton Candy

DRIVING DIRECTIONS

North on Hwy 57
RIGHT on Wayside Rd
LEFT on Weber Rd
(Park on right shoulder only)
EXIT (caution runners)
LEFT on Hill Rd / Hwy Z
RIGHT on Hwy 57

Bloody Mary's

Rocky & Tara's
Nut Haus W3239

Dundas Rd,

Kaukauna

2 Porta Potties



**RIGHT onto
Harvestore
LEFT onto
Schmidt Rd
LEFT onto
Fox River
Trail**

Dundas Rd 30

Brant St John

Harvestor Rd

Schmidt Rd 32

Man Cal Rd

31

33

34

35

36

57

Welcome

To The

Fox River Trail





School Rd

Mallard Rd



LedgeStone
Vinyards

6381 State Highway 57,
Greenleaf, WI 54126

41

Fair Rd

Fair Rd



Fox River
Trail

Follett St & Klaus St
Parking & Porta Potty

40

32

Greenleaf

96

96

PP

Stay on the Fox
River Trail

39

Mill Rd

38

38

PP

St Pats Church Rd

Holla
Wildlife

Lamers Clancy Rd

37

festival[®]
foods

36

Hill Rd

Askeaton

Hill Rd

PP

36



Rockland Rd

46

Old Martin Rd

Drivers: Take WI-32 N /WI-57 N

Runners: Stay on the Fox River Trail

45

Midway Rd



Porta Potty off Midway Rd. in trail parking lot

44

Eiler Rd

32

Lasee Rd

43

Wrightstown Rd

Partridge Rd

42

Meadowlark Rd

School Rd

YOU'LL SHINE WE'LL MAKE CERTAIN

It's your logo, so it has to be perfect. The perfect product, perfectly printed and delivered on time. That's certainty.



Apparel



Bags



Technology



And more!

Linda,
with 4imprint
5 years



Visit 4imprint.com or
call 1-877-446-7746
and be certain with
our 360° Guarantee®.

4imprint®

Thank you Green Bay Running Club for Finish Line Support!



FINISH

Runners: Stay on the Fox River Trail and continue on the Green Bay Riverwalk

Fox Point Boat Launch
3630 Riverside Dr.
De Pere

Restroom Open



Finish Line Instructions

Parking: We suggest parking in the Cherry St. Ramp. (entrance on Cherry between Washington & Adams.)

Finishing The Race: Meet your last runner & cross the finish line as a team to collect your finisher medals! Make sure your last runner is wearing the bib with the chip.

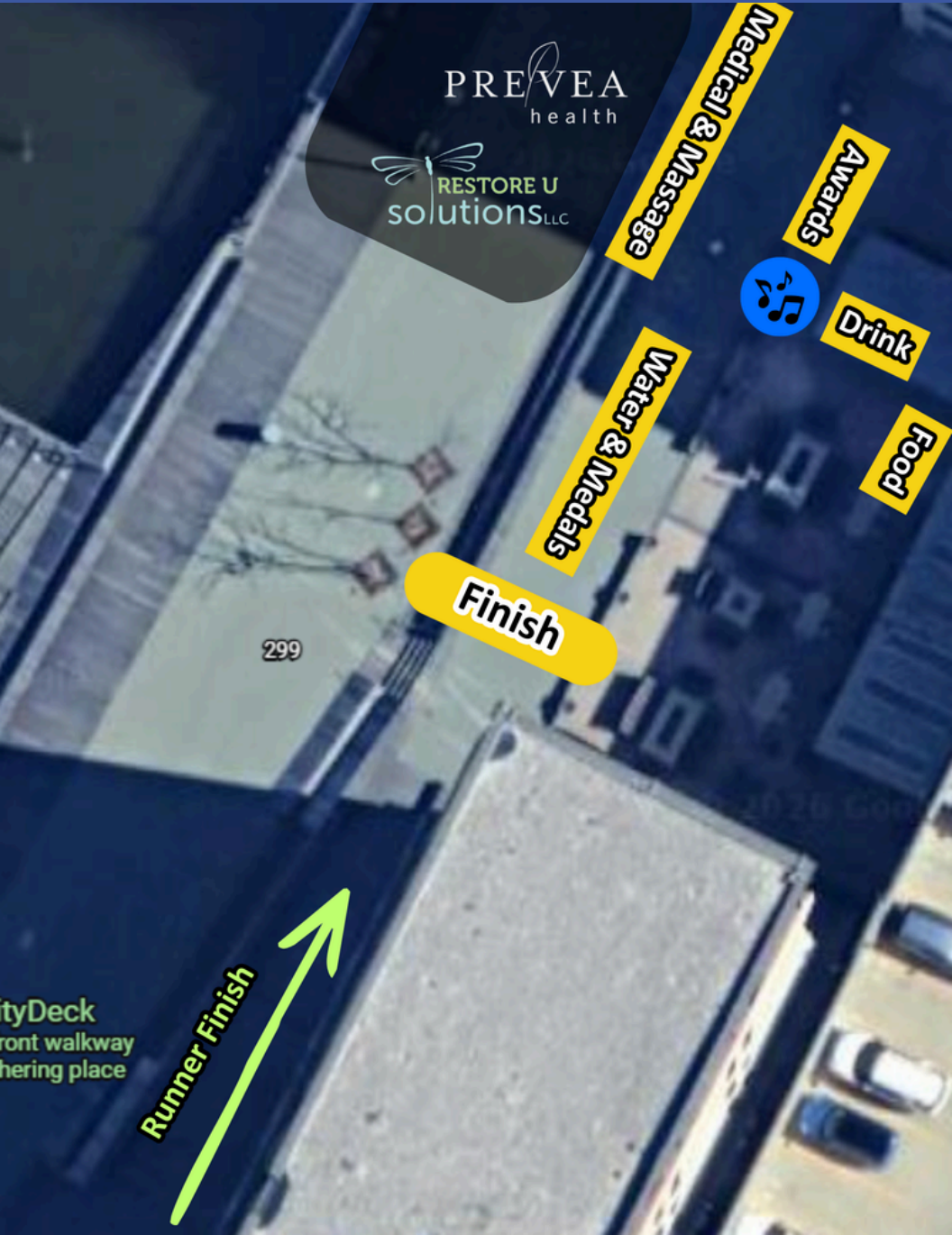
Food & Beverage: Food and beer will be available in the back corner of the patio.

Awards: We estimate that awards will be available to pick-up late afternoon. There will be no formal awards ceremony. If you think your team was in the top three of your division & category, please come to the tent at the finish line.

You can find complete results at www.runawayshoes.net/rattb at the end of the event. Awards will also be available for pick-up at a Run Away Shoes Appleton beginning Tuesday after the event.

Medical Care & Massage will be at the finish line!

Finish Line Map



PREVEA
health

RESTORE U
solutions LLC

Medical & Massage

Awards



Drink

Food

Water & Medals

Finish

299

Runner Finish

tyDeck
front walkway
bering place

Thank You

Title Sponsor

Series Sponsor



by HILTON™





4imprint



APRIL 25 OSHKOSH



SCAN FOR COMPLETE
EVENT DETAILS!

HALF MARATHON + MORE!



- SCENIC COURSE ALONG WATER & LIGHT GRAVEL TRAIL
- COMMEMORATIVE FINISHER MEDALS
- AGE GROUP AWARDS
- POST-RACE FOOD + POST RACE FOX RIVER BREWING CO. BEER



HOUDINI & 10K



11.7 APPLETON

SCENIC COURSE

MAGICIANS

FINISH LINE FUEL &

COPPER STATE BREWING CO. BEER



SIGN UP TODAY!





Santa Scamper



ONE MILE RUN/WALK

NOV 24 APPLETON



BURGER COUPON,



HAT!



SAVE THE DATE REGISTRATION OPENS IN JULY